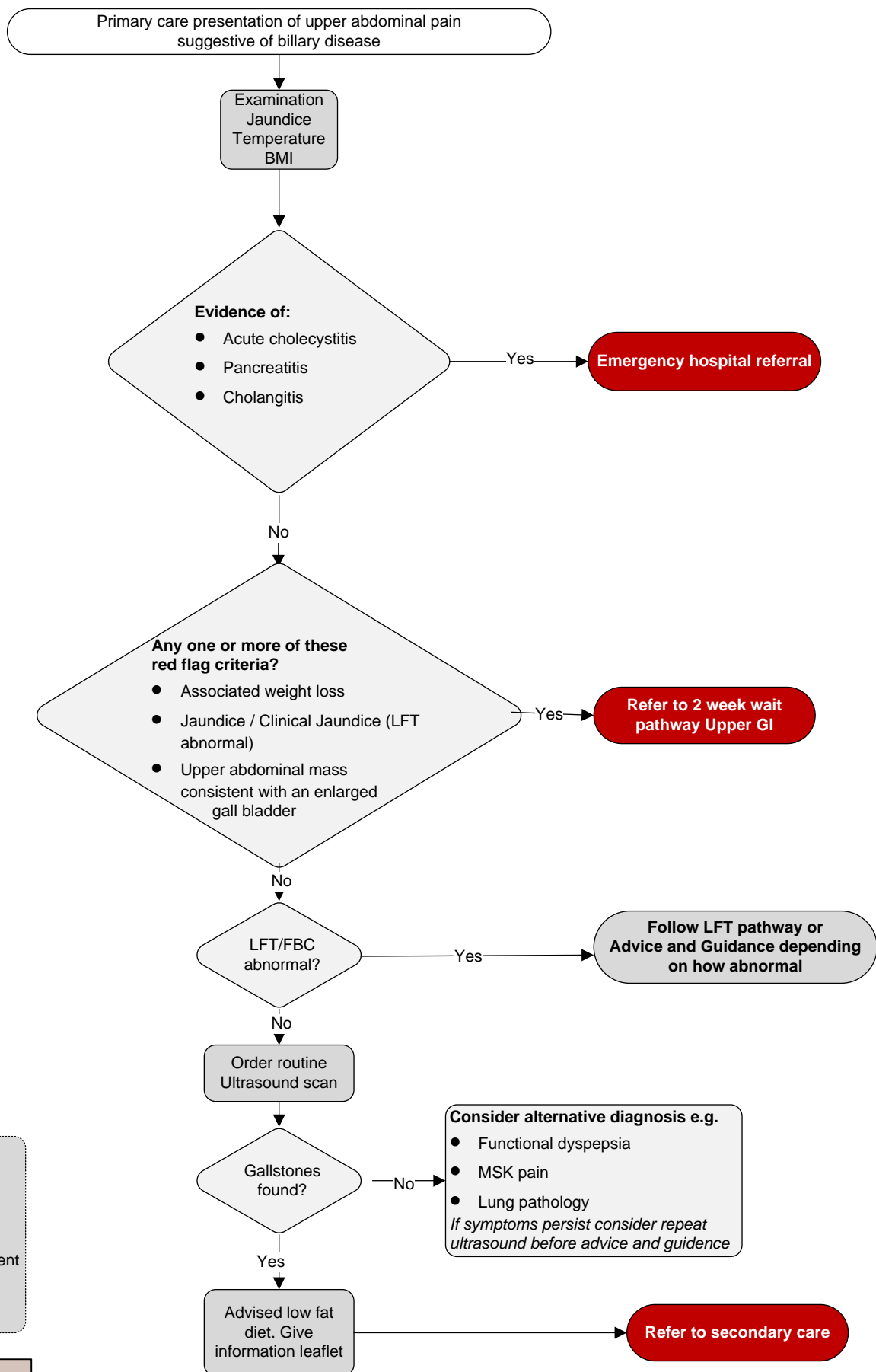


Symptomatic Gallstones pathway



N.B. Asymptomatic gallstones found incidentally do not require further investigation or referral
 NICE Guidance for Suspected Cancer recommends a 2WW referral (for CT) if there is upper abdominal mass consistent with an enlarged gall bladder

References :
 1) <http://sdm.rightcare.nhs.uk/pda/gallstones>
 2) <https://www.nice.org.uk/guidance/ng12>